

## User Manual

Technical Support  
U.S.: 1-866-SANDISK (726-3475)  
Worldwide: [www.sansa.com/support](http://www.sansa.com/support)  
Forum: <http://forums.sandisk.com/sansa>

For more information on this product, please visit [www.sansa.com](http://www.sansa.com)

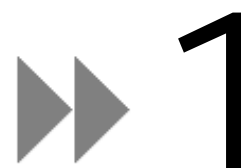
Clip-UM608-ENG

# ▶▶ Table of Contents

<b>SAFETY TIPS &amp; CLEANING INSTRUCTIONS.....</b>	<b>2</b>
<b>SANSA® CLIP OVERVIEW.....</b>	<b>3</b>
FEATURES .....	3
MINIMUM SYSTEM REQUIREMENTS.....	3
PACKAGE CONTENTS.....	4
SANSA® CLIP AT A GLANCE.....	4
HOLD SWITCH.....	5
MAIN MENU OPTIONS .....	5
PLAYBACK SCREEN.....	5
BATTERY .....	6
<b>BASIC USAGE .....</b>	<b>7</b>
POWER BUTTON .....	7
<i>Power On</i> .....	7
<i>Power Off</i> .....	7
<i>Reset</i> .....	7
CONNECTING TO YOUR COMPUTER .....	8
<b>LOADING CONTENTS .....</b>	<b>9</b>
LOADING MUSIC .....	9
<i>Drag and Drop</i> .....	9
<i>Windows Media Player</i> .....	9
<b>PLAYING CONTENTS.....</b>	<b>13</b>
PLAYING MUSIC .....	13
<b>FM RADIO (IF APPLICABLE) .....</b>	<b>15</b>
LISTENING TO FM RADIO .....	15
PROGRAMMING FM PRESETS .....	15
<b>RECORDING .....</b>	<b>16</b>
VOICE RECORDING .....	16
<b>DELETING MUSIC FILES .....</b>	<b>17</b>
<b>SETTINGS.....</b>	<b>18</b>
EQUALIZER.....	18
POWER .....	18
DISPLAY – BACKLIGHT .....	18
DISPLAY – BRIGHTNESS .....	18
LANGUAGE .....	19
FM SETTINGS (IF APPLICABLE) .....	19
VOLUME .....	19
RESET ALL .....	19
SYSTEM INFO.....	19
<b>TIPS &amp; TROUBLESHOOTING .....</b>	<b>20</b>
<b>LEARN MORE, SERVICE, AND WARRANTY INFORMATION.....</b>	<b>21</b>

# ▶▶ Table of Contents

GETTING TECHNICAL SUPPORT .....	21
SANDISK LIMITED WARRANTY .....	21
END USER LICENSE AGREEMENT .....	22



*This chapter provides you the safety tips and cleaning instructions for your SanDisk Sansa® Clip player.*

# Safety Tips & Cleaning Instructions

Read the safety instructions carefully before using your Sansa® player.

1. Read this entire manual to ensure proper usage.
2. Keep this User's Manual for future reference.
3. Do not use Headphones/Earphones while driving, cycling, or operating any motorized vehicle. This may create a traffic hazard and may be illegal in some areas. It can also be dangerous to play your music with Headphones/Earphones at high volume while walking, or engaged in other activities. You should exercise extreme caution and discontinue use in potentially hazardous situations.
4. Avoid using Headphones/Earphones at high volume. Hearing expert's advise against continuous loud and extended music play. Keep the volume at a moderate level, so that you are better able to hear outside sound, and to be considerate of the people around you.
5. Keep your player away from sinks, drinks, bathtubs, showers, rain, and other sources of moisture. Moisture can cause electric shocks with any electronic device.
6. Follow these tips to keep your player working well for a long time:
  - Clean your player with a soft lint-free cloth used on glass lenses.
  - Do not allow young children to use your player unsupervised.
  - Never force any connector into the ports of your player or your computer. Make sure your connectors are the identical shape and size before you connect.
  - Do not disassemble, crush, short-circuit or incinerate battery as it may cause fire, injury, burns or other hazards.

## Disposal Instructions

Do not dispose of this device with unsorted waste. Improper disposal may be harmful to the environment and human health. Please refer to your local waste authority for information on return and collection systems in your area.

*This chapter helps you familiarize yourself with the features and functionality of your Sansa® Clip player.*

## Sansa® Clip Overview

Sansa® Clip is a sleek and wearable MP3 player with a removable clip. It also has a built-in microphone, and a 1.0" display screen. You can enjoy a built-in microphone for recording voice. The Sansa 7" built-in rechargeable battery will last up to 15 hours.

### Features

- **Digital Audio Player** – supports MP3, WAV, WMA, secure WMA, and Audiobook files.
- **Voice Recorder** – supports voice recording function with built-in microphone.
- **EQ effect** – you are able to select an EQ mode to personalize your music experience.
- **Internal Memory** – allows users to store data on the internal memory.
- Works with most subscription services using WMDRM10.

### Minimum System Requirements

- Windows XP SP2
- Windows Media Player v10
- Intel Pentium class PC or higher
- CD-ROM drive
- USB 2.0 port for hi-speed transfers and charging

# Package Contents

Please unpack your **Sansa® Clip** and check that the following were included:

- Sansa® Clip player
- Earphones
- USB 2.0 Cable
- Quick Start Guide

## Sansa® Clip at a Glance



1	Display window	Display the information and status here
2	Left/Previous/Rewind	Press for previous track, rewind, or move left
3	Select Button	Press to select the item
4	Down/Submenu	Press to move down or to options menu
5	Right/Forward	Press for next track, fast forward, or move right
6	Up/Pause/Resume	Press to move up one item, pause, or resume
7	Menu	Return to the Main Menu
8	MIC	Built-in microphone
9	Earphone Port	Connect earphones here to listen
10	Volume Up	Turns up the volume
11	Volume Down	Turns down the volume
12	Hold/Lock	Factory sets to locked position (shows orange color). Slide to center position for controls. When locked, all controls are disabled to prevent accidental activation of controls.
13	Power/ <b>Reset</b>	<ul style="list-style-type: none"><li>• Slide up to turn on the player</li></ul>

- Slide up and hold for 2 seconds to turn off the player
- Slide up and hold for 15 seconds to reset your player

---

14 USB Port

Plug USB cable here to connect to the computer

---

15 Clip

The removable clip accessory

## Hold Switch

The **Hold** Switch is located on the left side of the player, and is used to prevent any accidental operation. All function keys will be disabled once the **Hold** Switch is moved to the lock position (Orange Color visible). All the buttons on the Sansa<sup>®</sup> Clip will not operate when the **Hold** Switch is active (Orange Color visible).

The following message will appear on the display screen if any buttons is pressed while the device is in the Locked position. The music should continue to play even if the device is locked.



## Main Menu Options



**Music** – browse and listen to music, audio books, or recordings



**Radio** (if applicable) – listen to FM broadcast radio and save presets



**Voice** – record voice using built-in microphone



**Settings** – view or customize the Sansa player features

## Playback Screen



1	Shuffle	Indicate that the Shuffle function is enabled
2	Repeat	Indicate that the Repeat function is enabled
3	Current/Total Tracks	Display the current track number and the total number of tracks
4	Battery Indicator	Display the battery status
5	Artist Name	Display the artist name
6	Title/Album	Display the song title and album name
7	Play Time	Display the elapsed time
8	Progress Bar	Display the progress of the current track
9	Play/Pause	Display the music or recording files playback status

## Battery

The Sansa<sup>®</sup> Clip player comes with an internal rechargeable battery. To use the player for the very first time, remember to fully charge the battery. You can charge your Sansa<sup>®</sup> player through the USB port of your computer, a car adapter (not included) USB port, or AC adapter (not included) USB port.

### Charging

To charge the battery, please follow these steps:

1. Connect the larger end of the USB cable into an available USB port on the computer.
2. Connect the smaller end of the USB cable into the Sansa<sup>®</sup> Clip player.
3. The computer must be on for most USB ports to charge your battery. Your Sansa<sup>®</sup> will show connected and the yellow charging indicator will appear. The battery level indicator will blink while charging. You will not be able to play while connected to the computer USB.
4. To stop recharging, simply disconnect the cable.

The battery can also be charged using an AC adapter (not included) or a car adapter (not included) and you will be able to play your device while charging with one of the adapters.

NOTE: Some low-power USB ports may not be able to provide enough charge power. Also note that the rechargeable batteries are not replaceable.



*This chapter provides you the basic usage instructions for your Sansa® Clip player.*

# Basic Usage

## Power Button

The power button is used to turn on or off the player, as well as resetting it.

### Power On

Slide the **Power Switch** up to turn on the player. The Blue Ring will light up and the Main Menu will appear after it has been booted up.

### Power Off

Slide the **Power Switch** up and hold it for about 2 seconds to turn off the player.

NOTE: To prevent accidental power on, move the **HOLD** switch to the locked position.

### Reset

If the Sansa® Clip player freezes up, slide the **Power Button** up and hold it for approximately 15 seconds. This is like a power down of the device. Once you perform the reset, the adjustments you made during the last operation will be gone.

## Connecting to your Computer

To connect the Sansa<sup>®</sup> player to your computer, follow these instructions:

1. Connect the smaller end of the USB cable into an available USB port on the computer.
2. Connect the larger end of the USB cable into the dock connector of the player.
3. The Sansa<sup>®</sup> player will show connected on its display screen.
4. The Sansa<sup>®</sup> player will appear in **My Computer** as Portable Media Player.



To remove the Sansa<sup>®</sup> player from your computer, simply disconnect the USB cable from the player after you have finished charging, transferring, firmware upgrading, or synchronizing files.

**WARNING:** Do not disconnect the player while it's transferring data. Disconnecting the player from the computer while the data is being transferred can damage the device.

# ▶▶ 4

*This chapter shows you how to transfer music files from your computer to your Sansa<sup>®</sup> Clip player.*

## Loading Contents

### Loading Music

You can transfer music from your computer to the Sansa<sup>®</sup> player using the drag-and-drop method or using music management software like Windows Media Player.

#### Drag and Drop

Follow these steps to drag-and-drop music to your Sansa<sup>®</sup> Clip player:

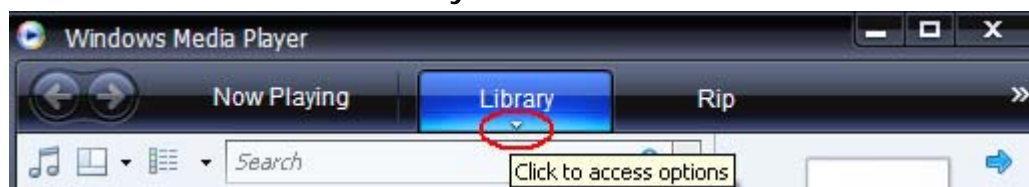
1. Connect your Sansa<sup>®</sup> Clip player to your computer.
2. Select **Open device to view files using Windows Explorer** on initial connection.
3. Double-click on the **Sansa<sup>®</sup>** player.
4. Double-click **MUSIC** folder.
5. Drag and drop music files from your computer to the Sansa<sup>®</sup> player's **MUSIC** folder.

#### Windows Media Player

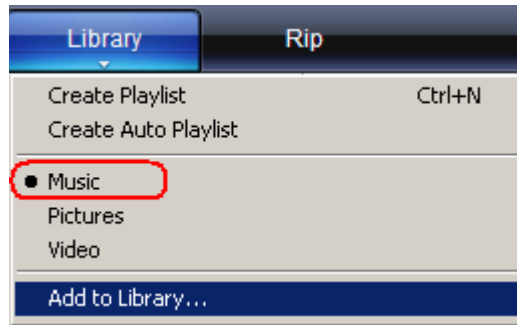
Before you can create playlist and transfer (or synchronize) them to your Sansa<sup>®</sup> player, you need to show Windows Media Player where your songs are located.

#### Adding Music Files to Library...

1. To add music files to WMP 11's library, follow these steps:
2. Click the arrow below the **Library** tab



3. Make sure **Music** is selected then click **Add to Library...**

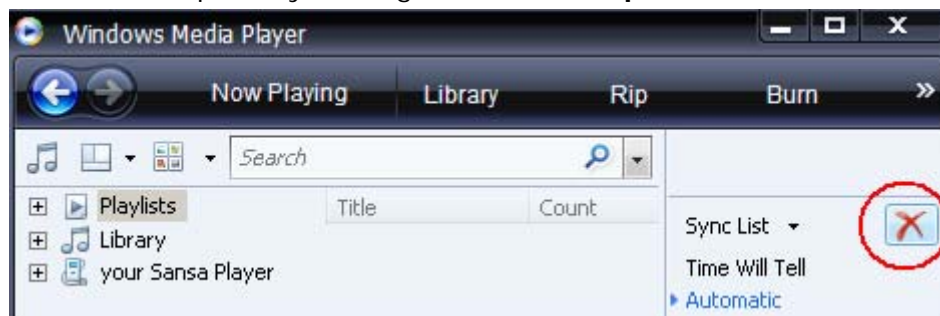


4. In the **Add to Library** dialog box, click one of the following options then click **OK**.
  - **My personal folders:**  
Use this option to monitor the digital media files stored in your personal Music folder as well as any files stored in the public Music folders that everyone who uses your computer has access to.
  - **My folders and those of others that I can access:**  
Use this option to monitor the digital media files stored in your personal Music folder, the files stored in the public Music folders, as well as the files stored in the personal Music that belong to other users on your computer.

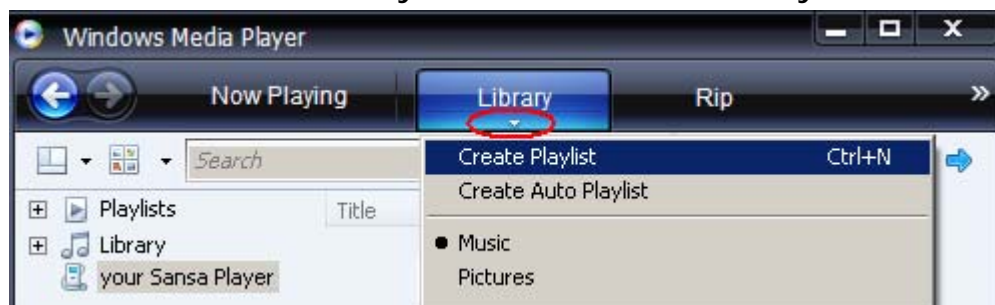
## Creating Playlist

To create playlist for Windows Media Player, follow these steps:

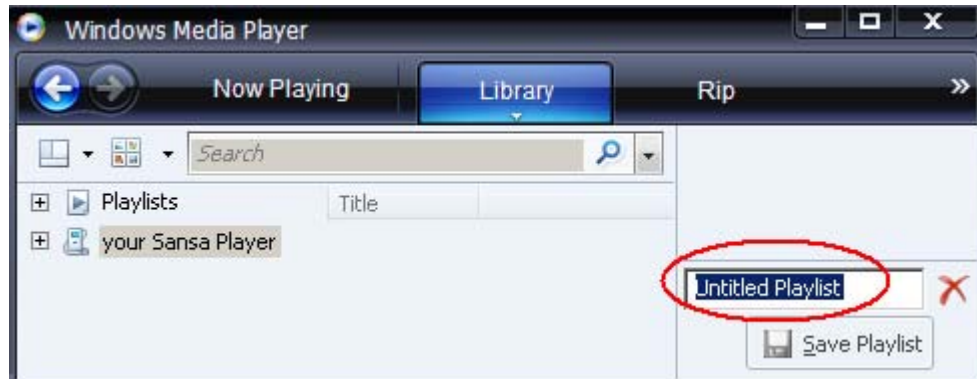
1. Launch Windows Media Player.
2. Clear the List pane by clicking the **Clear List pane button**.



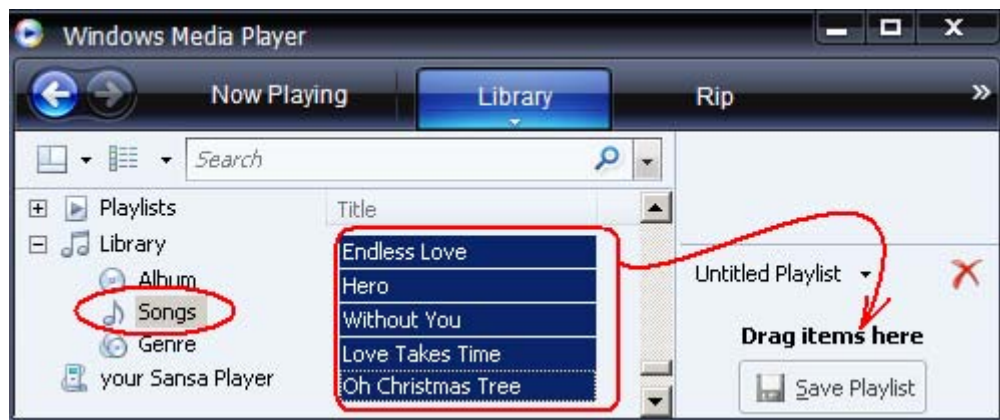
3. Click the arrow below **Library Tab** then select **Create Playlist**.



4. Type in the name of your **Playlist**.

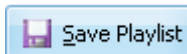


5. Click **Songs** from your Library then drag them from **Details pane** to the **List Pane**.



6. To re-arrange the songs, drag them up or down in the **List pane**.

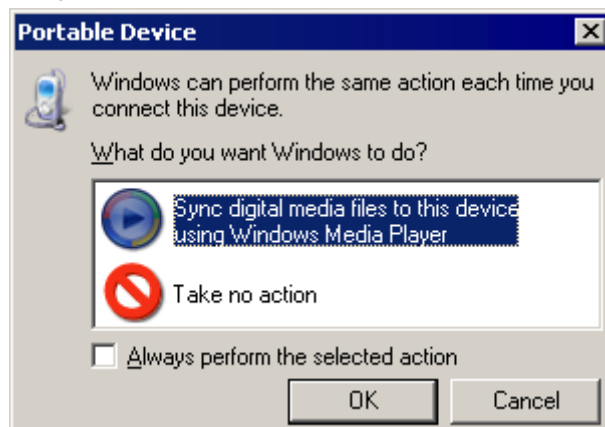
7. Click **Save Playlist**.



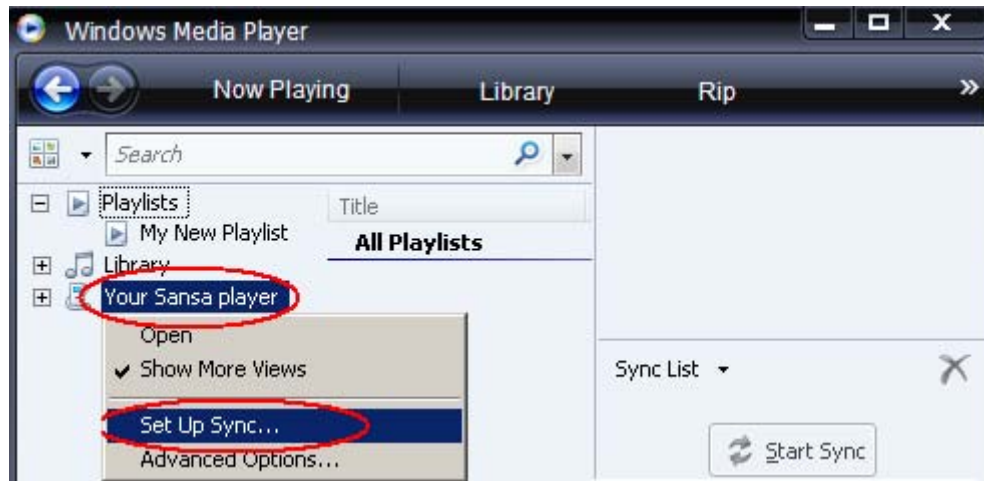
## Transferring Playlist

To transfer playlist to your Sansa<sup>®</sup> player, follow these steps:

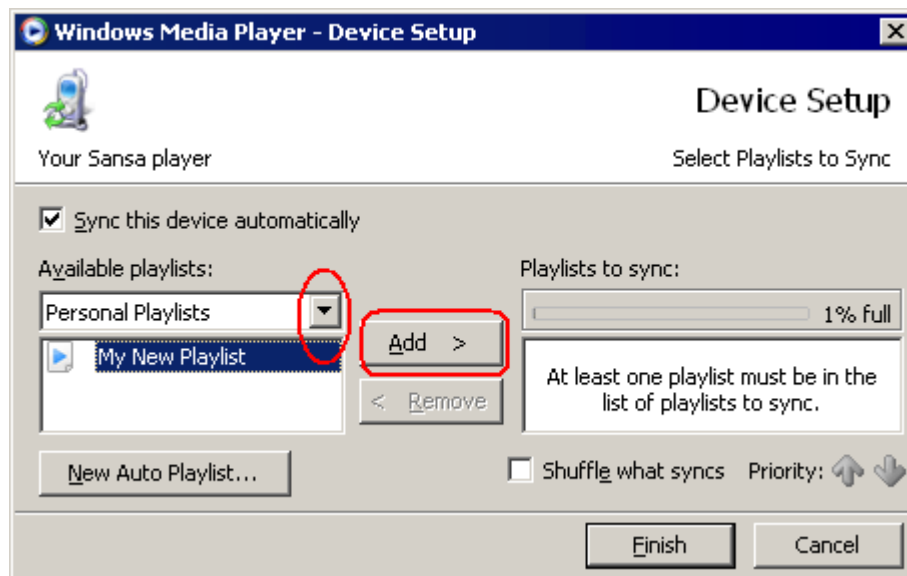
1. Connect your Sansa<sup>®</sup> player to the computer.
2. Select **Sync digital media files to this devices using Windows Media Player** on initial connection.



3. Right-click on **Your Sansa<sup>®</sup> Player** then select **Set Up Sync...**



4. Select **Personal Playlists** from the dropdown menu on the left pane.
5. Highlight the playlists you want transfer to your Sansa<sup>®</sup> player, click **Add** then **Finish**.



6. Synchronization will start as soon as you click Finish. To see the Sync progress, click on **Sync Results**.

*This chapter shows you how to play music on your Sansa<sup>®</sup> Clip player.*

# Playing Contents

## Playing Music

Follow these steps to play music, audiobooks, and voice recordings:

1. Select **Music** from the Main Menu. Voice recordings are located in Recordings.
2. Select **Artists, Albums, Songs, Genres, Playlists, Recordings (Voice), Audiobooks, and Music Options.**
3. Highlight and select the desired track or file to play.
4. Press >>| button to skip to the next song or press-and-hold to fast forward.
5. Press |<< button to go back to the beginning of the song or press |<< button twice to go back to the previous song. Press-and-hold the |<< button to rewind.
6. The following options are available during playback.

### *Repeat Mode*

1. In the playback mode, press **Submenu** button to enter **Music Options**.
2. Move down to highlight **Repeat**.
3. Press **Select** to toggle and choose a repeat mode:
  - Off: No repeat of tracks
  - Songs: Repeat the current track
  - All: Repeat all selected tracks
4. Press |<< button to return to previous menu.

### *Shuffle Mode*

1. In the playback mode, press **Submenu** button to enter **Music Options**.
2. Move down to **Shuffle**.
3. Press **Select** button to toggle between Shuffle on and Shuffle off (to play songs in random order, set Shuffle to ON).
4. Press |<< button to return to previous menu.

### *MusicEQ*

The Sansa<sup>®</sup> Clip player provides various EQ modes such as: Rock, Pop, Jazz, Classical, and Custom.

1. In the playback mode, press **Submenu** button to enter **Music Options**.
2. Move down and select **Music EQ**.
3. Move down to the desired EQ mode and press **Select**.
4. Press |<< button to return to previous menu.

### *Add song to the GoList*

1. In the playback mode, press **Submenu** button to enter **Music Options**.
2. Move down and select **Add Song to GoList**.
3. Press |<< button to return to previous menu.

### *Remove song from GoList*

1. Press **Menu** button and select **Music** menu.
2. Select **Playlists**.
3. Select **GoList** to play songs saved in the Go List.
4. Press |<< or >>| button to select the song you want to remove.
5. Press **Submenu** button.
6. Move down to **Remove Song from GoList** and press **Select**.

### *Clear the GoList*

1. In the playback mode, press **Submenu** button to enter **Music Options**.
2. Move down and select **Clear GoList**.
3. Select **yes** to clear the list.
4. Press |<< button to return to previous menu.



*This chapter shows you how to use your Sansa® Clip player's built-in microphone.*

# Recording

## Voice Recording

The Sansa® Clip has a built-in microphone allowing you to record your own voice, an interview, or a speech.

To start voice recording, follow these steps:

1. Press the **Menu** button to return to Main Menu.
2. Select **Voice**
3. Press **Play/Pause** to start recording.
4. To pause recording, press **Play/Pause** again
5. To stop recording, press **Select**. A pop-up window will appear on the screen. Select **Yes** to save recording. The recording will be saved in the **RECORD/VOICE** folder.
6. Press |<< button to return to the Voice Menu.

### **NOTE: For Home and Personal Use**

This product is intended to be used for recording and playback for your home and personal enjoyment. Copying and commercial use of copyrighted material without permission of the copyright owner may be prohibited by law. Use of your media player, in compliance with all copyright and applicable intellectual property laws, remains the responsibility of the user of the product.

*This chapter shows you how to delete contents on Sansa<sup>®</sup> Clip player.*

## Deleting Music Files

There are 2 ways to delete music files. You can delete them from the player directly or using the computer.

To delete music files directly from the Sansa<sup>®</sup> player, follow these steps:

1. In playback mode, press **Submenu** button.
2. Select the **Delete Song** item.

To delete music files using the computer, follow these steps:

1. Connect your Sansa<sup>®</sup> to the computer.
2. Select **Open device to view files using Windows Explorer** on initial connection.
3. Locate the folder where your music files are stored.
4. Highlight and delete the music files or folder.

*This chapter shows you how to customize your Sansa<sup>®</sup> Clip player's settings*

## Settings

You can personalize your Sansa<sup>®</sup> Clip player's settings by scrolling down to **Settings** and setting it from the **Main Menu**.

### Equalizer

1. Press **Menu** button to return to **Main Menu**.
2. Move down to **Settings** and select it.
3. Select **Equalizer**.
4. Move down to the desired EQ mode and press **Select**.
5. Press |<<| button to return to **Main Menu**.

### Power

You can set the timer under Auto Power Off and Sleep settings to turn off the Sansa<sup>®</sup> player automatically when it is playing for a certain time.

1. Press **Menu** button to return to the **Main Menu**.
2. Move to **Power** and select it.
3. Select **Auto Power Off** or **Sleep**.

### Display – Backlight

The Display Backlight timer program can save power. After having been idled for predefined seconds, the device will trigger the Backlight timer program automatically and cease the backlight. You can press any button to wake the backlight up. To set the backlight timer, please execute the following steps:

1. Press **Menu** button to return to the **Main Menu**.
2. Move to **Settings** and select it.
3. Select **Display**.
4. Select **Backlight**.
5. Press |<< or >>| button to select desired backlight timer.

### Display – Brightness

To adjusting the display brightness for better viewing in different lighting environment, please execute the following steps:

1. Press **Menu** button to return to the **Main Menu**.

2. Move to **Settings** and select it.
3. Select **Display**.
4. Select **Brightness**.
5. Press |<< or >>| button to set the contrast level.

## Language

1. Press **Menu** button to return to the **Main Menu**.
2. Move to **Settings** and select it.
3. Select **Language**.
4. Select a desired language.

## Volume

1. Press **Menu** button to return to the **Main Menu**.
2. Move down to **Settings** and select it.
3. Select **Volume**.
4. Highlight the desired volume settings then press **Select** button.

## Reset All

This will reset the player to its original factory settings.

1. Press **Menu** to return to the **Main Menu**.
2. Move to **Reset All** and select it.
3. Select **Save** to reset to factory settings or **Cancel** to stop.

## System Info

This displays information regarding your Sansa<sup>®</sup> Clip (such as firmware rev, available memory, number of songs loaded, etc).

1. Press **Menu** button to return to the **Main Menu**.
2. Move to **System Info** and select it.

*This chapter helps you get the most from your Sansa<sup>®</sup> Clip player with tips and troubleshooting.*

## Tips & Troubleshooting

How do I drag music files to my Sansa<sup>®</sup> Clip player?

As long as the files are WMA or MP3, they can be dragged into the Media folder.

Which bit rate will the Sansa<sup>®</sup> Clip player support?

The Sansa<sup>®</sup> Clip player will support 64-320Kbps for MP3 and 32-192Kbps for WMA.

Why should I update the firmware?

You should always update the player to the latest firmware to ensure that it functions correctly and has all the latest features.

What music file formats does the Sansa<sup>®</sup> Clip support?

The Sansa<sup>®</sup> MP3 Player will support MP3, WAV, WMA, secure WMA, and Audible.

Some of my music files are on my player, but cannot be played. When I select them, another song begins to play. What is wrong?

You may not have purchased the rights to play the song on an additional device. To test this, try to play a song that you have copied from an older CD and converted to MP3 format. If you can play that song, but not the song that will not play, then you need to purchase the rights to play the song.

Is the player compatible with podcast?

As long as the podcast are in MP3 format and an appropriate bit rate (32-320 kbps), then the player should be capable of playing the files.

Why does my player say unknown artist/album?

Normally this is because the ID3 tags or WMA meta data information are missing. On the computer, right-click the song, choose Properties, Summary tab then Advanced. Then you can input the data such as Artist, Album, Song Title, Track Number, Genre, and Year.